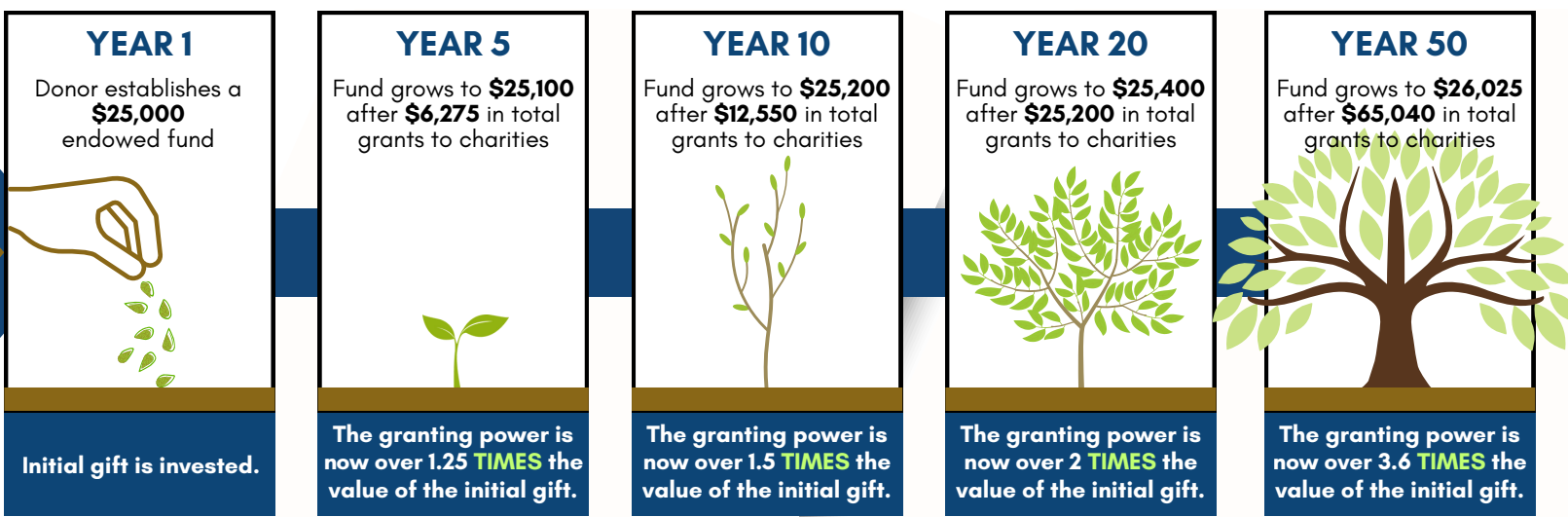


Because of you... Our impact continues to grow!



See how your legacy gift can grow!



This illustration assumes a 6.5% return on a rolling average with a 5% annual spend policy and 1.42% annual fees (1% BCF fee + 0.42% investment fee). Also assumes no additional contribution to the fund.

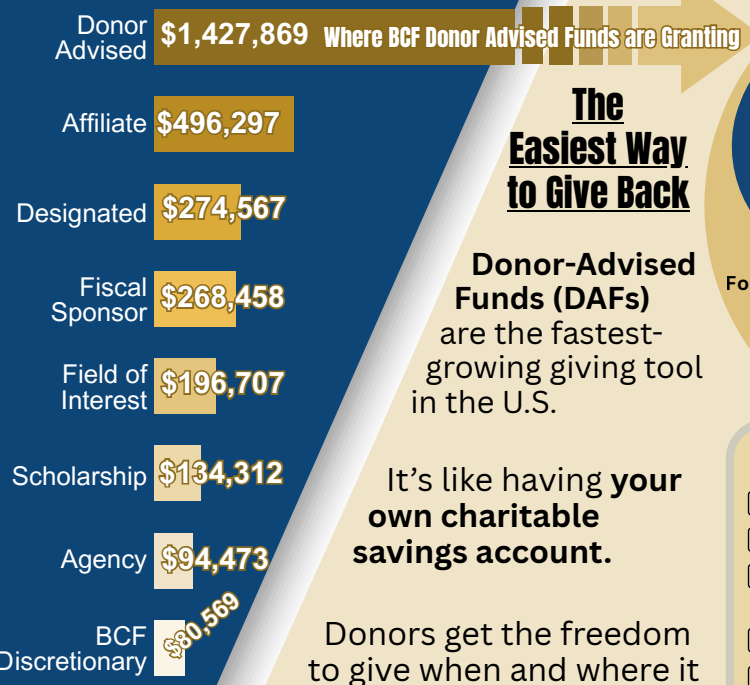


BUILD

STEWARD

LEAD

GRANTS BY FUND TYPE

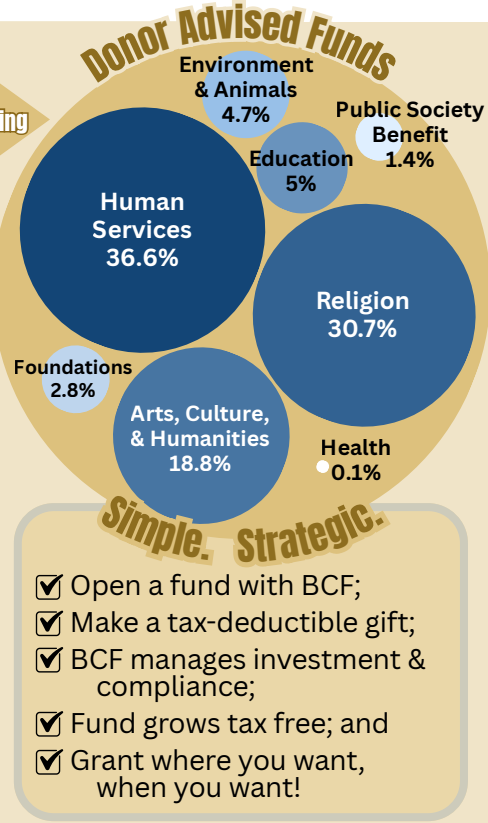


The Easiest Way to Give Back

Donor-Advised Funds (DAFs) are the fastest-growing giving tool in the U.S.

It's like having **your own charitable savings account.**

Donors get the freedom to give when and where it matters most to them.



BCF ADDS NEW SCHOLARSHIP

Greg Mueggenborg Memorial Scholarship



The Greg Mueggenborg Memorial Scholarship supports active Sigma Chi members at the University of Oklahoma. Greg, a 1998 Bartlesville High graduate and OU alumnus, cherished his Sigma Chi brothers — his legacy lives on through this scholarship.

The Legacy Society honors donors who give \$25,000 or more to an existing or new endowed fund* at the BCF.
*Donor Advised Funds are not eligible.

Gifts can be made now or planned—through a will, trust, retirement account, or life insurance—to ensure lasting support for the causes you care about.

Members are recognized on our Legacy Wall and remembered forever for their generosity, helping build a stronger future for generations to come.

Join us—become a Legacy Society Donor or Fundholder today!



Supporting Nonprofit Leaders Strengthening Community

The BCF collaborates with the Bartlesville Regional United Way to empower local nonprofit leaders to build connections and amplify their impact in our community.

At Ray of Hope, we believe in the power of connection & collaboration. The Nonprofit Coffee Club has provided nonprofits like ours with a safe & welcoming space to share ideas, exchange resources, & offer encouragement.

Nonprofit leadership comes with unique challenges, & the chance to connect over a cup of coffee has been an invaluable way to strengthen relationships & build a stronger network of support within our community.

Rhonda Hudson,
Executive Director
Ray of Hope Advocacy Center

Dear Friends,

This past year we've worked together to strengthen local nonprofits, support students, and invest in projects that will shape our community for years to come. Every grant, scholarship, and initiative we've led has been possible because of donors like you who believe in the power of community.

With your continued support, we can build on this momentum. I invite you to join me in giving to the Community Foundation as we close the year. Your contribution to any of the impactful projects we host, no matter the size, helps our community thrive!

Thank you for walking alongside us in this work. We are stronger together.

With gratitude,
Laura Jensen
 President & Chief Executive Officer
 Bartlesville Community Foundation



BULK RATE
 U.S. POSTAGE PAID
 NONPROFIT
 BARTLESVILLE, OK
 PERMIT 74

OUR BOARD

Ashley Kane, Chair
Julie Mauntel, Vice Chair
Josh Randolph, Treasurer
Donna Bode, Secretary
Jessica Birk
Greg Collins
Amanda Haberstroh

Janie Kirkpatrick
Gary Lorenz
Debbie Mueggenborg
Ryan Reynolds
Quinn Schipper
Brittany Shoemake

**BARTLESVILLE
 COMMUNITY
 FOUNDATION**
 TOGETHER WE CAN
 321 SE DELAWARE AVE. | BARTLESVILLE, OK | 918.337.2287
 BARTLESVILLECF.ORG

2025 Annual Report

Our Mission:
*To provide a simple way to do
 good works.*

Bartlesville
 Community
 Foundation

