

Investment Presentation for

BCF Quarterly

Account 480053016

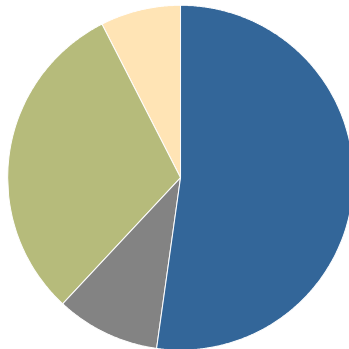
Report	Page
BCF - Historical Account Summary.	1
BCF - Historical Asset Allocation.	2
BCF - Equity Stock Sector Allocation Analysis.	4
BCF - Portfolio Performance Summary.	5
BCF - Portfolio Performance Analysis.	6
BCF - Growth Analysis.	7
BCF - Asset Class Performance Details.	8
BCF - Benefits of Diversification.	10
BCF - Historical Holdings Details.	11
BCF - Trust Disclosure.	17

Historical Account Summary as of 12/31/2025

BCF

Asset Allocation

Asset Category	Market Value	% Total
Equity	13,391,997.96	52.2
Alternatives	2,524,629.62	9.8
Fixed Income	7,841,340.34	30.5
Cash Equivalents	1,910,807.54	7.4
Other Assets	0.00	0.0
Total	\$25,668,775.46	100.0%



Account Statistics

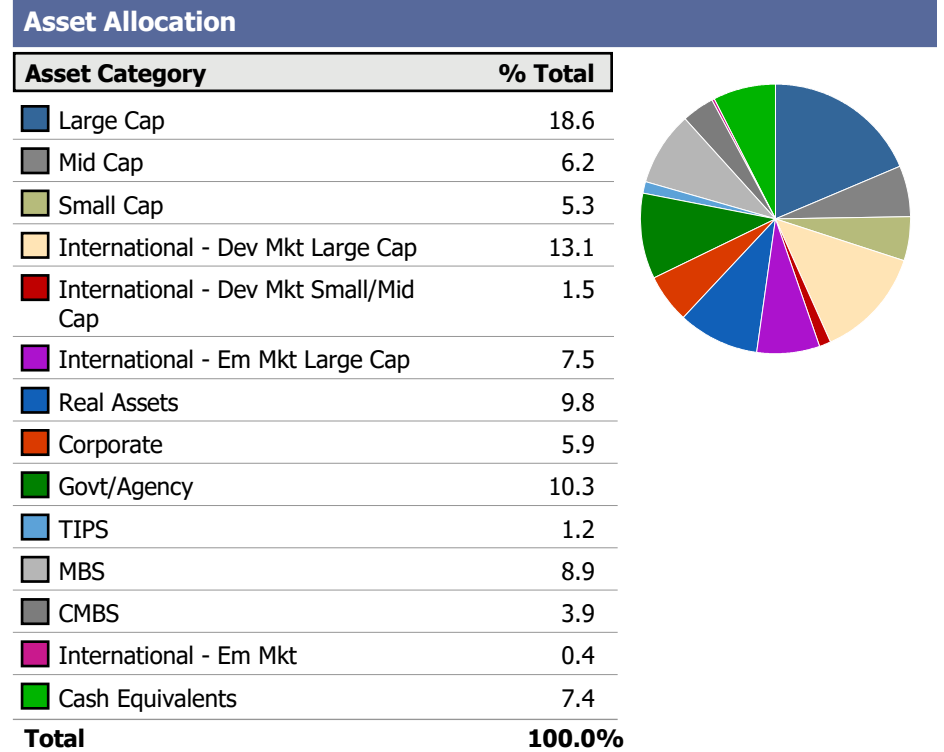
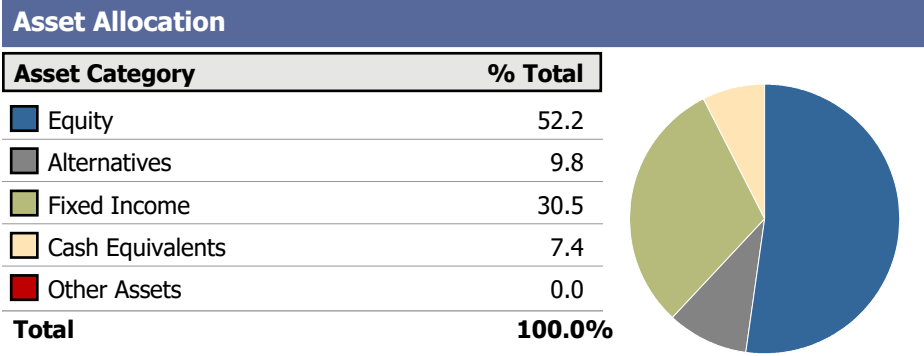
Total Market Value	\$25,668,775.46
Total Unrealized Gain/Loss	\$3,845,809.42
Estimated Annual Income	\$828,302.87
Estimated Portfolio Yield	3.23%
YTD Long Term Gain/Loss	\$1,114,382.24
YTD Short Term Gain/Loss	\$119,590.81
Investment Officer	Scott Hopson
Administrative Officer	Aaron Tesavis
Target Account	ABT Aggressive Growth & Income Model v.2
Policy Account	Aggressive Growth & Income

Top 3 Holdings

Asset	Units	Price	Tax Cost	Market Value	Gain/Loss	Est. Income	Yield	% Total
INVESCO GOVERNMENT & AGENCY FUND	1,911,016	1.00	1,911,016.06	1,911,016.06	0.00	70,847.10	3.71	7.44
GOLDMAN SACHS ETF TR ACCESS INVT GR	32,668	46.25	1,633,901.37	1,510,895.00	-123,006.37	70,889.56	4.69	5.89
VANGUARD TAX MGD FD EUROPE PAC EFT	23,240	62.47	1,126,676.10	1,451,802.80	325,126.70	46,689.16	3.22	5.66
Total			\$4,671,593.53	\$4,873,713.86	\$202,120.33	\$188,425.82	3.87%	18.99%

Historical Asset Allocation as of 12/31/2025

BCF



Asset Allocation Detail

Asset Category	Tax Cost	Market Value	Gain/Loss	Est. Income	% Total
Equity					
Large Cap	3,228,703.68	4,774,400.64	1,545,696.96	52,650.25	18.60
Mid Cap	930,322.45	1,592,690.19	662,367.74	18,021.58	6.20
Small Cap	1,008,655.61	1,358,445.45	349,789.84	14,341.66	5.29
International - Dev Mkt Large Cap	2,468,863.84	3,364,893.91	896,030.07	116,001.86	13.11
International - Dev Mkt Small/Mid Cap	302,137.86	374,624.96	72,487.10	12,355.42	1.46
International - Em Mkt Large Cap	1,779,050.98	1,926,942.81	147,891.83	38,571.60	7.51

Asset Allocation Detail

Asset Category	Tax Cost	Market Value	Gain/Loss	Est. Income	% Total
Total Equity	\$9,717,734.42	\$13,391,997.96	\$3,674,263.54	\$251,942.37	52.17
Alternatives					
Real Assets	2,017,078.11	2,524,629.62	507,551.51	173,447.00	9.84
Total Alternatives	\$2,017,078.11	\$2,524,629.62	\$507,551.51	\$173,447.00	9.84
Fixed Income					
Corporate	1,633,901.37	1,510,895.00	-123,006.37	70,889.56	5.89
Govt/Agency	2,688,703.10	2,635,339.44	-53,363.66	101,424.79	10.27
TIPS	318,299.30	299,681.37	-18,617.93	12,161.48	1.17
MBS	2,360,558.26	2,291,033.55	-69,524.71	107,055.57	8.93
CMBS	1,051,508.34	991,121.52	-60,386.82	34,188.44	3.86
International - Em Mkt	124,375.60	113,269.46	-11,106.14	6,346.57	0.44
Total Fixed Income	\$8,177,345.97	\$7,841,340.34	\$-336,005.63	\$332,066.40	30.55
Cash Equivalents					
Cash Equivalents	1,910,807.54	1,910,807.54	0.00	70,847.10	7.44
Total Cash Equivalents	\$1,910,807.54	\$1,910,807.54	\$0.00	\$70,847.10	7.44
Grand Total	\$21,822,966.04	\$25,668,775.46	\$3,845,809.42	\$828,302.87	100.00

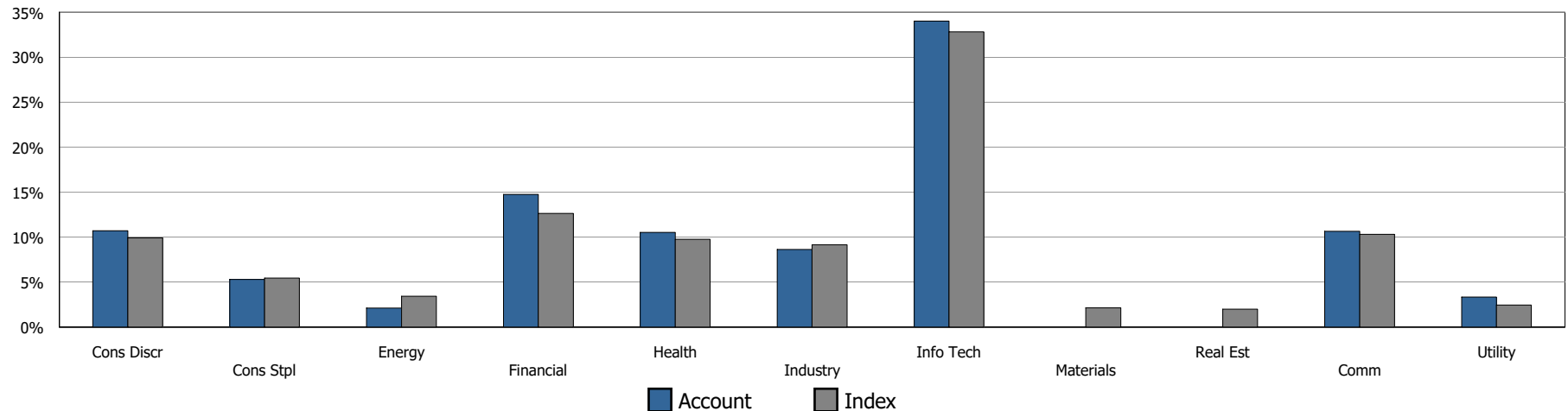
Equity Stock Sector Allocation Analysis

BCF

Stock Attributes		
Attribute	Account	Index

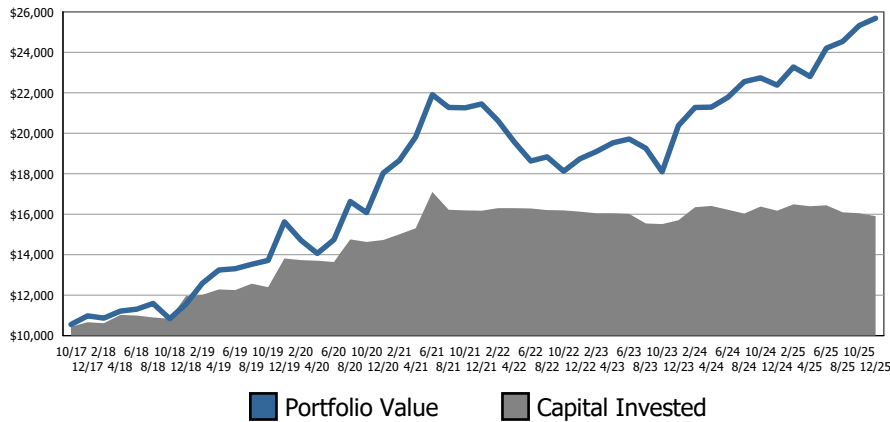
Stock Sectors			
Sector	Account Mkt Val	Account %	Index %
Consumer Discretion	374,213.48	10.7	9.9
Consumer Staples	184,565.49	5.3	5.5
Energy	73,524.19	2.1	3.4
Financials	515,244.64	14.7	12.6
Health Care	367,470.81	10.5	9.8
Industrials	301,360.85	8.6	9.1
Information Technology	1,188,947.60	34.0	32.8
Materials	0.00	0.0	2.1
REITs	0.00	0.0	2.0
Communication Services	371,933.42	10.6	10.3
Utilities	116,358.75	3.3	2.4
Total	\$3,493,619.23	100.0%	100.0%

Stock Sectors

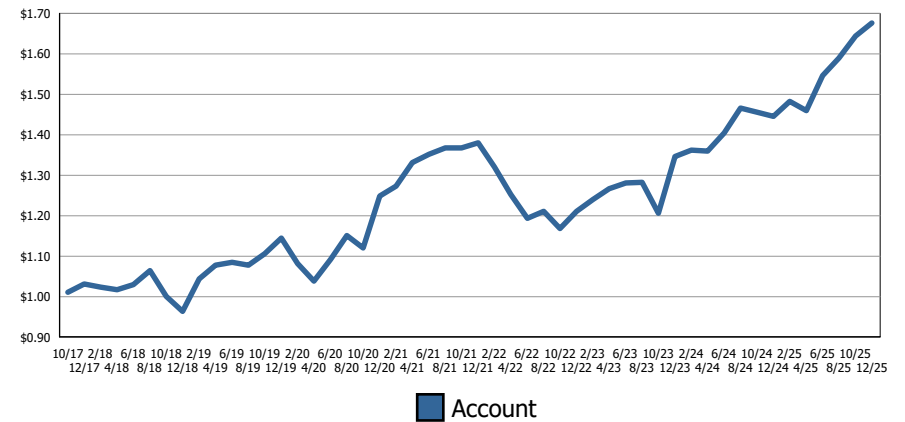


Index account is S&P 500 (TR).

Portfolio Growth (\$000s)



Growth of \$1



Performance

	YTD	2024	2023	2022	1 Year	3 Year	5 Year	Since Inception	Inception Date
Total Managed	15.98%	7.37%	11.18%	-12.28%	15.98%	11.45%	6.07%	6.46%	09/30/2017
Allocation Benchmark for 480053016	13.81%	8.82%	12.58%	-12.12%	13.81%	11.71%	6.45%	6.81%	09/30/2017
Equity	21.63%	9.17%	16.78%	-16.65%	21.63%	15.74%	8.79%	9.23%	09/30/2017
Fixed	7.16%	1.58%	5.61%	-12.14%	7.16%	4.76%	0.08%	1.96%	09/30/2017
Alternatives	31.89%	24.36%	9.41%	5.50%	31.89%	21.52%	19.52%	11.02%	09/30/2017
Cash	4.22%	4.90%	4.72%	1.56%	4.22%	4.62%	3.07%	2.38%	09/30/2017

The Total Account returns presented on this report are calculated net of fees. Fees are not prorated across asset classes. Net of Fees data only available after February 2007; Performance class for Growth of \$1 is Total Managed.

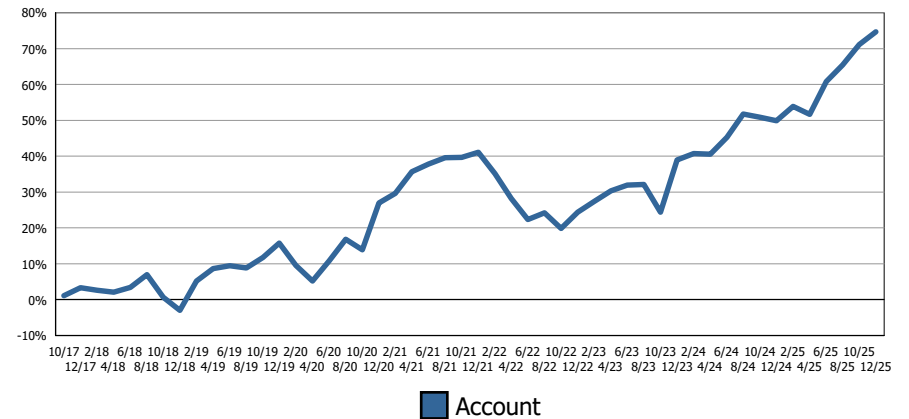
Top Ten Contributors, Trailing 12 Months

Asset - Total Account	Contribution	Weight
VANGUARD TAX MGD FD EUROPE PAC EFT	1.79	5.10
ISHARES TR MSCI EAFE INDEX FD MFC	1.56	4.93
GOLDMAN SACHS ETF TR ACTIVEBETA EME	1.12	3.34
MICRON TECHNOLOGY INC	1.02	0.43
ISHARES SILVER TRUST	0.79	0.55
ABRDN PLATINUM ETF	0.66	0.54
ISHARES TR S&P 500 INDX FD MFC	0.60	3.36
SPROTT FDS TR LITHIUM MINERS HDC	0.59	0.53 ¹
VanEck Emerging Markets Z	0.48	3.22 ¹
JANUS DETROIT STR TR HENDERSON MTG	0.47	5.43
Total	9.09%	27.44%

Top Ten Detractors, Trailing 12 Months

Asset - Total Account	Contribution	Weight
FISERV INC	-0.27	0.40
ISHARES TR S&P 500 GRW	-0.18	0.90 ¹
SALESFORCE.COM INC	-0.07	0.31 ¹
ACCENTURE PLC IRELAND SHS CL A	-0.07	0.30
FORTUNE BRANDS HOME & SEC IN COM	-0.07	0.26 ¹
MOTOROLA SOLUTIONS INC COM NEW	-0.04	0.24
PROCTER & GAMBLE	-0.03	0.24
UNITEDHEALTH GROUP INC	-0.03	0.11 ¹
BOSTON SCIENTIFIC CORP	-0.03	0.30 ¹
HONEYWELL INTL INC COM	-0.02	0.28
Total	-0.80%	3.34%

Performance Over Time

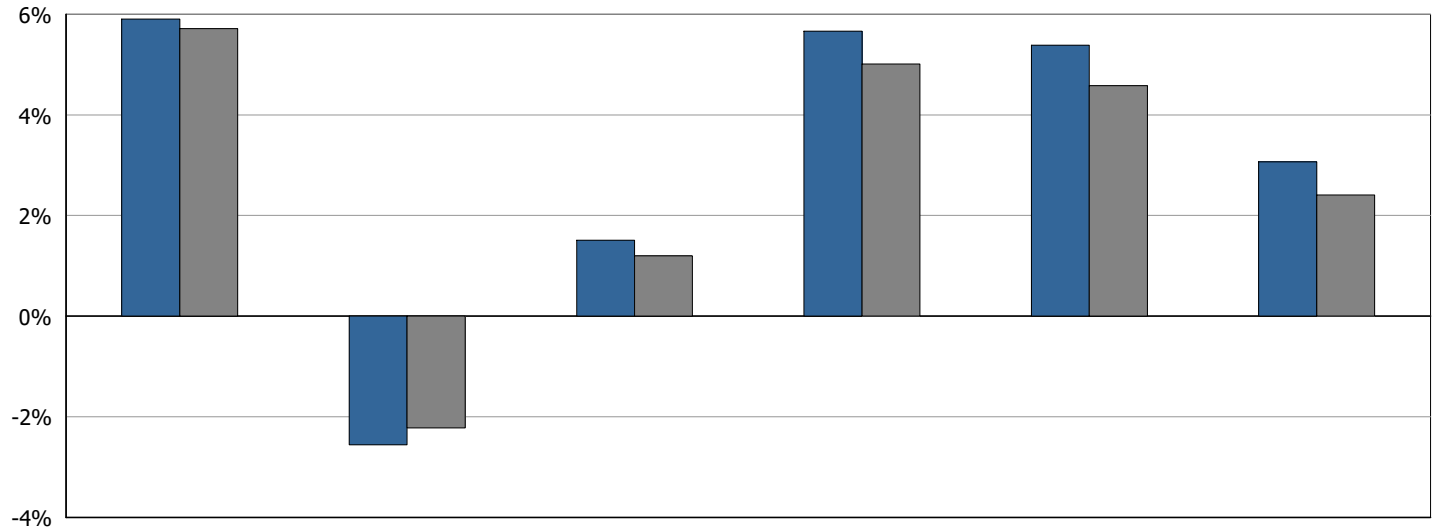


Performance Statistics, Since 09/30/2017

Name	Account	Index
Annualized Return	6.99%	---
Annualized Standard Deviation	10.80%	---
Standard Deviation	3.12%	---
Alpha	---	0.00
Beta	---	1.00
Sharpe Ratio	---	---

Assets with a (1) were not held for the entire period; Included asset classes: Equity, Fixed Income, Cash Equivalents, Other Assets, Alternatives; Weight is calculated as an average over the period held; Total performance class used is Total Managed.

Total Managed Performance



Account/Index	Q3 2024	Q4 2024	Q1 2025	Q2 2025	Q3 2025	Q4 2025
BCF	5.90%	-2.56%	1.51%	5.66%	5.39%	3.06%
Allocation Benchmark for 480053016	5.71%	-2.23%	1.20%	5.01%	4.58%	2.41%

Account Flows

Flow Type	Q3 2024	Q4 2024	Q1 2025	Q2 2025	Q3 2025	Q4 2025
Beginning Market Value	\$21,787,388.93	\$22,859,967.57	\$22,373,922.42	\$23,023,587.05	\$24,211,837.22	\$25,101,645.73
Net Contributions Less Withdrawals	-200,758.35	105,639.64	305,908.37	-99,490.98	-396,024.49	-186,311.02
Earned Income	135,958.22	242,432.39	133,800.27	183,016.86	143,584.04	353,628.34
Market Appreciation/Depreciation	1,137,378.76	-834,117.17	209,955.99	1,104,724.30	1,142,248.97	411,641.48
Ending Market Value	\$22,859,967.57	\$22,373,922.42	\$23,023,587.05	\$24,211,837.22	\$25,101,645.73	\$25,680,604.53

Market values include accruals.

Asset Class Performance Details as of 12/31/2025

BCF

	YTD	2024	2023	2022	1 Year	3 Year	5 Year	Since Inception	Inception Date
Total Managed	16.49%	7.90%	11.73%	-11.87%	16.49%	11.99%	6.58%	6.99%	09/30/2017
Allocation Benchmark for 480053016	13.81%	8.82%	12.58%	-12.12%	13.81%	11.71%	6.45%	6.81%	09/30/2017
Equity	21.63%	9.17%	16.78%	-16.65%	21.63%	15.74%	8.79%	9.23%	09/30/2017
Large Cap	18.13%	14.15%	19.38%	-16.44%	18.13%	17.20%	11.63%	11.94%	09/30/2017
S&P 500 (TR)	17.88%	25.02%	26.29%	-18.11%	17.88%	23.01%	14.42%	14.76%	09/30/2017
Mid Cap	7.39%	12.65%	14.74%	-13.18%	7.39%	11.55%	8.14%	8.50%	09/30/2017
S&P MIDCAP 400 Gross USD	7.50%	13.93%	16.44%	-13.06%	7.50%	12.56%	9.12%	9.39%	09/30/2017
Small Cap	9.51%	10.66%	17.80%	-17.85%	9.51%	12.60%	6.71%	8.18%	09/30/2017
S&P SMALLCAP 600 Gross USD	6.02%	8.70%	16.05%	-16.10%	6.02%	10.17%	7.31%	7.74%	09/30/2017
International - Dev Mkt Large Cap	32.88%	3.67%	18.15%	-14.35%	32.88%	17.63%	9.21%	7.55%	09/30/2017
MSCI EAFE Net USD	31.22%	3.82%	18.24%	-14.45%	31.22%	17.22%	8.92%	7.47%	09/30/2017
International - Dev Mkt Small/Mid Cap	32.10%	---	---	-23.36%	32.10%	---	---	---	06/30/2020
MSCI EAFE Net USD	31.22%	---	---	-14.45%	31.22%	---	---	---	06/30/2020
International - Em Mkt Large Cap	31.26%	4.15%	9.75%	-22.11%	31.26%	14.48%	2.52%	5.55%	09/30/2017
MSCI EM (EMERGING MARKETS) Net USD	33.57%	7.50%	9.83%	-20.09%	33.57%	16.40%	4.20%	5.70%	09/30/2017
Alternatives	31.89%	24.36%	9.41%	5.50%	31.89%	21.52%	19.52%	11.02%	09/30/2017
Real Assets	31.89%	24.36%	9.41%	5.50%	31.89%	21.52%	19.52%	11.02%	09/30/2017
Real Assets Blended Index	7.29%	10.57%	8.35%	2.50%	7.29%	8.73%	12.19%	5.23%	09/30/2017
Fixed	7.16%	1.58%	5.61%	-12.14%	7.16%	4.76%	0.08%	1.96%	09/30/2017
Corporate	7.58%	1.21%	8.78%	-15.78%	7.58%	5.80%	-0.39%	2.18%	09/30/2017
Bloomberg U.S. Corporate Investment Grade Gross US	7.77%	2.13%	8.52%	-15.76%	7.77%	6.10%	-0.09%	2.60%	09/30/2017
Government/Agency	5.51%	0.56%	3.89%	-9.10%	5.51%	3.30%	-0.12%	1.01%	09/30/2017
Bloomberg U.S. Government: Intermediate Gross USD	6.50%	2.44%	4.30%	-7.73%	6.50%	4.40%	0.64%	1.81%	09/30/2017

Account 480053016

	YTD	2024	2023	2022	1 Year	3 Year	5 Year	Since Inception	Inception Date
TIPS	6.56%	1.92%	3.94%	-12.04%	6.56%	4.13%	0.99%	2.97%	09/30/2017
ICE BofA US Inflation-Linked Treasury Index Gross	6.76%	1.98%	3.59%	-12.61%	6.76%	4.09%	0.88%	2.91%	09/30/2017
MBS	8.54%	1.42%	5.38%	-11.82%	8.54%	5.07%	0.27%	1.56%	09/30/2017
Bloomberg U.S. Mortgage Backed Securities Gross US	8.58%	1.20%	5.05%	-11.81%	8.58%	4.90%	0.15%	1.44%	09/30/2017
CMBS	7.54%	4.22%	4.99%	-11.22%	7.54%	5.58%	0.51%	2.27%	09/30/2017
Bloomberg U.S. Mortgage Backed Securities Gross US	8.58%	1.20%	5.05%	-11.81%	8.58%	4.90%	0.15%	1.44%	09/30/2017
International - Em Mkt	8.37%	8.19%	9.56%	-15.52%	8.37%	8.70%	2.06%	2.72%	09/30/2018
Bloomberg U.S. Aggregate Gross USD	7.30%	1.25%	5.53%	-13.01%	7.30%	4.66%	-0.36%	2.15%	09/30/2018
Cash	4.22%	4.90%	4.72%	1.56%	4.22%	4.62%	3.07%	2.38%	09/30/2017
Cash Equivalents	4.22%	4.90%	4.72%	1.56%	4.22%	4.62%	3.07%	2.38%	09/30/2017
Citigroup FTSE US 1-MONTH TREASURY BILL INDEX Gros	4.35%	5.38%	5.13%	1.48%	4.35%	4.95%	3.25%	2.54%	09/30/2017

Benefits of Diversification as of 12/31/2025

BCF

2015	2016	2017	2018	2019	2020	2021	2022	2023	2024	2025
Municipal - Tax Exempt 3.40%	Small Cap 26.56%	International - Dev Mkt Large Cap 25.03%	Government/Agency 1.43%	Large Cap 31.49%	Large Cap 18.40%	Real Assets 34.92%	Real Assets 2.50%	Large Cap 26.29%	Large Cap 25.02%	International - Dev Mkt Large Cap 31.22%
MBS 1.51%	Mid Cap 20.74%	International - Dev Mkt Small/Mid Cap 25.03%	Municipal - Tax Exempt 1.21%	Mid Cap 26.20%	Mid Cap 13.66%	Large Cap 28.71%	Municipal - Tax Exempt - 7.21%	International - Dev Mkt Large Cap 18.24%	Mid Cap 13.93%	International - Dev Mkt Small/Mid Cap 31.22%
Large Cap 1.38%	Large Cap 11.96%	Large Cap 21.83%	MBS 0.99%	Small Cap 22.78%	Small Cap 11.29%	Small Cap 26.82%	Government/Agency - 7.73%	International - Dev Mkt Small/Mid Cap 18.24%	Real Assets 10.57%	Large Cap 17.88%
Government/Agency 1.18%	Real Assets 10.70%	Mid Cap 16.24%	Diversified Inv-Grade 0.01%	International - Dev Mkt Large Cap 22.01%	Corporate 9.89%	Mid Cap 24.76%	MBS -11.81%	Mid Cap 16.44%	Small Cap 8.70%	Account 16.49%
Diversified Inv-Grade 0.55%	Corporate 6.11%	Small Cap 13.23%	Corporate - 2.51%	International - Dev Mkt Small/Mid Cap 22.01%	Account 9.67%	International - Dev Mkt Large Cap 11.26%	Account -11.87%	Small Cap 16.05%	Account 7.90%	MBS 8.58%
Corporate - 0.68%	Diversified Inv-Grade 2.65%	Corporate 6.42%	Large Cap - 4.38%	Account 19.32%	International - Dev Mkt Large Cap 7.82%	International - Dev Mkt Small/Mid Cap 11.26%	Diversified Inv-Grade -13.01%	Account 11.73%	International - Dev Mkt Large Cap 3.82%	Corporate 7.77%
International - Dev Mkt Large Cap - 0.81%	MBS 1.67%	Municipal - Tax Exempt 4.88%	Account - 6.09%	Corporate 14.54%	International - Dev Mkt Small/Mid Cap 7.82%	Account 11.12%	Mid Cap -13.06%	Corporate 8.52%	International - Dev Mkt Small/Mid Cap 3.82%	Mid Cap 7.50%
International - Dev Mkt Small/Mid Cap - 0.81%	Government/Agency 1.05%	Diversified Inv-Grade 3.54%	Small Cap - 8.48%	Real Assets 10.42%	Diversified Inv-Grade 7.51%	Municipal - Tax Exempt 0.38%	International - Dev Mkt Large Cap -14.45%	Real Assets 8.35%	Government/Agency 2.44%	Diversified Inv-Grade 7.30%
Small Cap - 1.97%	International - Dev Mkt Large Cap 1.00%	MBS 2.47%	Mid Cap -11.08%	Diversified Inv-Grade 8.72%	Government/Agency 5.73%	Corporate - 1.04%	International - Dev Mkt Small/Mid Cap -14.45%	Municipal - Tax Exempt 5.70%	Corporate 2.13%	Real Assets 7.29%
Mid Cap - 2.18%	International - Dev Mkt Small/Mid Cap 1.00%	Government/Agency 1.14%	Real Assets -11.30%	Municipal - Tax Exempt 7.12%	Municipal - Tax Exempt 5.70%	MBS - 1.04%	Corporate -15.76%	Diversified Inv-Grade 5.53%	Diversified Inv-Grade 1.25%	Government/Agency 6.50%
Real Assets -19.84%	Municipal - Tax Exempt - 0.28%	Real Assets - 2.30%	International - Dev Mkt Large Cap -13.79%	MBS 6.35%	MBS 3.87%	Diversified Inv-Grade - 1.54%	Small Cap -16.10%	MBS 5.05%	MBS 1.20%	Small Cap 6.02%
			International - Dev Mkt Small/Mid Cap -13.79%	Government/Agency 5.20%	Real Assets -13.60%	Government/Agency - 1.69%	Large Cap -18.11%	Government/Agency 4.30%	Municipal - Tax Exempt - 0.31%	Municipal - Tax Exempt 5.18%

Performance class used for account returns is Total Managed; Account inception date for total performance class is 9/30/2017.

Account 480053016

Historical Holdings Details as of 12/31/2025

BCF

Asset	Units	Price	Tax Cost	Market Value	Gain/Loss	Est. Income	Current Yield	% Total
Equity								
Large Cap								
ABBVIE INC COM	390	228.49	45,685.07	89,111.10	43,426.03	2,698.80	3.03	0.35
ACCENTURE PLC IRELAND SHS CL A	232	268.30	37,690.09	62,245.60	24,555.51	1,512.64	2.43	0.24
ADOBE SYSTEMS INC	51	349.99	17,516.22	17,849.49	333.27	0.00	0.00	0.07
ADVANCED MICRO DEVICES	165	214.16	28,293.79	35,336.40	7,042.61	0.00	0.00	0.14
ALPHABET INC CAP STK CL A	720	313.00	132,206.00	225,360.00	93,154.00	604.80	0.27	0.88
AMAZON COM INC COM	696	230.82	155,836.00	160,650.72	4,814.72	0.00	0.00	0.63
AMERICAN EXPRESS	140	369.95	41,933.44	51,793.00	9,859.56	459.20	0.89	0.20
APPLE COMPUTER INC	706	271.86	81,688.94	191,933.16	110,244.22	734.24	0.38	0.75
APPLIED MATLS INC	207	256.99	36,448.71	53,196.93	16,748.22	380.88	0.72	0.21
ARISTA NETWORKDS INC COM SHS	369	131.03	48,420.18	48,350.07	-70.11	0.00	0.00	0.19
ATMOS ENERGY CORP	303	167.63	48,285.99	50,791.89	2,505.90	1,212.00	2.39	0.20
BANK OF AMER CORP COM	1,218	55.00	36,121.46	66,990.00	30,868.54	1,364.16	2.04	0.26
BERKSHIRE HATHAWAY INC DEL CL B NEW	89	502.65	43,045.19	44,735.85	1,690.66	0.00	0.00	0.17
BOSTON SCIENTIFIC CORP	356	95.35	37,340.45	33,944.60	-3,395.85	0.00	0.00	0.13
BROADCOM INC COM	291	346.10	60,357.95	100,715.10	40,357.15	756.60	0.75	0.39
CAPITAL ONE FINANCIAL CORP	323	242.36	31,208.80	78,282.28	47,073.48	1,033.60	1.32	0.30
CBOE GLOBAL MARKETS INC COM	130	251.00	27,114.76	32,630.00	5,515.24	374.40	1.15	0.13
CONOCOPHILLIPS	448	93.61	24,962.88	41,937.28	16,974.40	1,505.28	3.59	0.16
COSTCO WHSL CORP NEW COM	28	862.34	26,310.96	24,145.52	-2,165.44	145.60	0.60	0.09
EATON CORP PLC SHS	46	318.51	16,846.02	14,651.46	-2,194.56	191.36	1.31	0.06

Asset	Units	Price	Tax Cost	Market Value	Gain/Loss	Est. Income	Current Yield	% Total
Equity								
Large Cap (continued)								
ECOLAB INC COM	258	262.52	45,787.41	67,730.16	21,942.75	753.36	1.11	0.26
FISERV INC	608	67.17	47,671.60	40,839.36	-6,832.24	0.00	0.00	0.16
GENERAL DYNAMICS CORP COM	177	336.66	37,428.57	59,588.82	22,160.25	1,062.00	1.78	0.23
GENERAL ELECTRIC CO COM NEW	63	308.03	17,118.51	19,405.89	2,287.38	90.72	0.47	0.08
HOME DEPOT INC	186	344.10	69,736.41	64,002.60	-5,733.81	1,711.20	2.67	0.25
HONEYWELL INTL INC COM	312	195.09	43,384.00	60,868.08	17,484.08	1,485.12	2.44	0.24
INTUITIVE SURGICAL INC COM NEW	30	566.36	14,361.76	16,990.80	2,629.04	0.00	0.00	0.07
IQVIA HLDGS INC COM	399	225.41	47,110.66	89,938.59	42,827.93	0.00	0.00	0.35
ISHARES TR S&P 500 GRW	120	123.26	14,821.09	14,791.20	-29.89	59.40	0.40	0.06
ISHARES TR S&P 500 INDX FD MFC	1,293	684.94	426,374.16	885,627.42	459,253.26	10,347.88	1.17	3.45
J P MORGAN CHASE & CO COM	294	322.22	34,606.04	94,732.68	60,126.64	1,764.00	1.86	0.37
JOHNSON & JOHNSON	377	206.95	51,302.10	78,020.15	26,718.05	1,960.40	2.51	0.30
LAM RESEARCH CORP COM NEW	464	171.18	18,190.91	79,427.52	61,236.61	482.56	0.61	0.31
LILLY ELI	51	1,074.68	34,289.23	54,808.68	20,519.45	352.92	0.64	0.21
LOWES COS INC COM	300	241.16	34,590.16	72,348.00	37,757.84	1,440.00	1.99	0.28
MASTERCARD INC CLASS A	62	570.88	33,369.24	35,394.56	2,025.32	215.76	0.61	0.14
META PLATFORMS INC CL A	170	660.09	104,278.34	112,215.30	7,936.96	357.00	0.32	0.44
MICRON TECHNOLOGY INC	462	285.41	31,760.15	131,859.42	100,099.27	212.52	0.16	0.51
MICROSOFT CORP	410	483.62	170,389.51	198,284.20	27,894.69	1,492.40	0.75	0.77
MONDELEZ INTL INC CL A	465	53.83	28,261.53	25,030.95	-3,230.58	930.00	3.72	0.10
MOTOROLA SOLUTIONS INC COM NEW	73	383.32	31,156.01	27,982.36	-3,173.65	353.32	1.26	0.11
NRG ENERGY INC COM NEW	360	159.24	36,428.97	57,326.40	20,897.43	633.60	1.11	0.22
NVIDA CORP COM	1,212	186.50	164,165.36	226,038.00	61,872.64	48.48	0.02	0.88
OMNICOM GROUP INC COM	871	80.75	61,309.98	70,333.25	9,023.27	2,787.20	3.96	0.27
ORACLE CORP	160	194.91	27,084.39	31,185.60	4,101.21	320.00	1.03	0.12

Asset	Units	Price	Tax Cost	Market Value	Gain/Loss	Est. Income	Current Yield	% Total
Equity								
Large Cap (continued)								
PROCTER & GAMBLE	370	143.31	37,605.68	53,024.70	15,419.02	1,563.99	2.95	0.21
RAYTHEON TECHNOLOGIES CORP COM	166	183.40	22,855.62	30,444.40	7,588.78	451.52	1.48	0.12
SPDR SER TR PORTFOLIO S&P 500	5,389	80.22	430,461.18	432,305.58	1,844.40	4,887.82	1.13	1.68
TRAVELERS COS INC THE	298	290.06	40,224.53	86,437.88	46,213.35	1,311.20	1.52	0.34
UNION PACIFIC	354	231.32	48,128.99	81,887.28	33,758.29	1,954.08	2.39	0.32
WAL MART STORES INC	276	111.41	27,102.97	30,749.16	3,646.19	259.44	0.84	0.12
WELLS FARGO & CO COM	216	93.20	20,035.72	20,131.20	95.48	388.80	1.93	0.08
Total Large Cap			\$3,228,703.68	\$4,774,400.64	\$1,545,696.96	\$52,650.25	1.10%	18.60
Mid Cap								
SPDR S & P MIDCAP 400 ETF TR UTSER1	2,296	603.28	731,554.73	1,385,130.88	653,576.15	15,872.25	1.15	5.40
UNIFIED SER TR DEAN MC VL NL S	7,844	26.46	198,767.72	207,559.30	8,791.58	2,149.33	1.04	0.81
Total Mid Cap			\$930,322.45	\$1,592,690.18	\$662,367.73	\$18,021.58	1.13%	6.20
Small Cap								
ADVISORS INNER CIRCLE FS WESTWOOD	14,210	19.10	291,885.13	271,404.41	-20,480.72	2,529.32	0.93	1.06
ISHARES S&P SMALL CAP 600	1,104	120.18	135,967.80	132,678.72	-3,289.08	1,906.61	1.44	0.52
ISHARES TR RSSLL 2000 INDX MFC	3,877	246.16	580,802.68	954,362.32	373,559.64	9,905.74	1.04	3.72
Total Small Cap			\$1,008,655.61	\$1,358,445.45	\$349,789.84	\$14,341.66	1.06%	5.29
International - Dev Mkt Large Cap								
FRANKLIN FTSE JAPAN ETF	10,118	34.45	277,918.09	348,565.10	70,647.01	17,949.33	5.15	1.36
ISHARES TR MSCI EAFE INDEX FD MFC	13,377	96.03	858,006.77	1,284,593.31	426,586.54	43,435.12	3.38	5.00
J P MORGAN EXCHANGE-TRADED FD BEATBUILDERS EUR	3,819	73.30	206,262.88	279,932.70	73,669.82	7,928.24	2.83	1.09
VANGUARD TAX MGD FD EUROPE PAC EFT	23,240	62.47	1,126,676.10	1,451,802.80	325,126.70	46,689.16	3.22	5.66

Asset	Units	Price	Tax Cost	Market Value	Gain/Loss	Est. Income	Current Yield	% Total
Equity								
Total International - Dev Mkt Large Cap			\$2,468,863.84	\$3,364,893.91	\$896,030.07	\$116,001.86	3.45%	13.11
International - Dev Mkt Small/Mid Cap								
ISHARES TR EAFE SML CP ETF	4,832	77.53	302,137.86	374,624.96	72,487.10	12,355.42	3.30	1.46
Total International - Dev Mkt Small/Mid Cap			\$302,137.86	\$374,624.96	\$72,487.10	\$12,355.42	3.30%	1.46
International - Em Mkt Large Cap								
GOLDMAN SACHS ETF TR ACTIVEBETA EME	21,460	41.62	779,760.58	893,165.20	113,404.62	20,558.68	2.30	3.48
NEW WORLD FD INC NEW CL R-6	9,028	93.17	814,395.62	841,101.77	26,706.15	12,647.67	1.50	3.28
VANGUARD EMERGING MKT ETF	3,584	53.76	184,894.78	192,675.84	7,781.06	5,365.25	2.78	0.75
Total International - Em Mkt Large Cap			\$1,779,050.98	\$1,926,942.81	\$147,891.83	\$38,571.60	2.00%	7.51
Total Equity			\$9,717,734.42	\$13,391,997.96	\$3,674,263.54	\$251,942.37	1.88%	52.17
Alternatives								
Real Assets								
ABRDN PALLADIUM ETF	502	145.38	44,982.47	72,980.76	27,998.29	0.00	0.00	0.28
ABRDN PLATINUM ETF	401	186.43	33,909.50	74,758.43	40,848.93	0.00	0.00	0.29
FIRST TR EXCHNG TRADED FD VIII FT ENERGY INCOME	34,476	19.87	689,175.03	685,038.12	-4,136.91	51,714.00	7.55	2.67
FIRST TR GLOBAL COMMODITY STRATEGY	15,876	23.23	360,017.63	368,799.48	8,781.85	65,425.00	17.74	1.44
ISHARES SILVER TRUST	1,346	64.42	28,692.90	86,709.32	58,016.42	0.00	0.00	0.34
SPROTT FDS TR LITHIUM MINERS	14,542	12.05	93,359.37	175,229.65	81,870.28	12,986.01	7.41	0.68
TORTOISE CAP SER TR NORTH AMERN PIPE	22,632	35.29	509,347.36	798,771.54	289,424.18	30,983.21	3.88	3.11
VANGUARD INTL EQUITY INDX FD GLBL EX US ETF	5,723	45.84	257,593.85	262,342.32	4,748.47	12,338.79	4.70	1.02
Total Real Assets			\$2,017,078.11	\$2,524,629.62	\$507,551.51	\$173,447.00	6.87%	9.84

Asset	Units	Price	Tax Cost	Market Value	Gain/Loss	Est. Income	Current Yield	% Total
Total Alternatives			\$2,017,078.11	\$2,524,629.62	\$507,551.51	\$173,447.00	6.87%	9.84
Fixed Income								
Corporate								
GOLDMAN SACHS ETF TR ACCESS INVT GR	32,668	46.25	1,633,901.37	1,510,895.00	-123,006.37	70,889.56	4.69	5.89
Total Corporate			\$1,633,901.37	\$1,510,895.00	\$-123,006.37	\$70,889.56	4.69%	5.89
Govt/Agency								
GOLDMAN SACHS TREAS ACCT ETF	3,017	99.94	301,854.20	301,518.98	-335.22	12,122.31	4.02	1.17
INVESCO EXCH TRADED RD TR II SHORT TERM TREAS	181	105.65	19,140.36	19,122.65	-17.71	975.59	5.10	0.07
ISHARES BARCLAYS 20 PLUS YEAR TREASURY BOND FUND	1,276	87.16	120,470.37	111,216.16	-9,254.21	4,926.64	4.43	0.43
ISHARES BARCLAYS 3-7 YR TSY BD FD	4,149	119.35	490,034.19	495,183.15	5,148.96	17,210.05	3.48	1.93
ISHARES BARCLAYS AGENCY BOND	4,163	110.25	464,248.51	458,970.75	-5,277.76	17,214.01	3.75	1.79
ISHARES TR BARCLYS 10-20 YR	4,435	101.67	490,179.22	450,906.45	-39,272.77	18,786.66	4.17	1.76
ISHARES TR INDEX BARCLAYS 1-3 YR	3,229	82.82	265,112.48	267,425.78	2,313.30	10,177.81	3.81	1.04
ISHARES TR INDEX BARCLYS 7-10 YR	5,522	96.16	537,663.77	530,995.52	-6,668.25	20,011.73	3.77	2.07
Total Govt/Agency			\$2,688,703.10	\$2,635,339.44	\$-53,363.66	\$101,424.79	3.85%	10.27
TIPS								
SCHWAB STRATEGIC TR US TIPS ETF	11,313	26.49	318,299.30	299,681.37	-18,617.93	12,161.48	4.06	1.17
Total TIPS			\$318,299.30	\$299,681.37	\$-18,617.93	\$12,161.48	4.06%	1.17
MBS								
ISHARES BARCLAYS MBS BOND FD	10,423	95.22	1,027,647.70	992,478.06	-35,169.64	41,744.12	4.21	3.87
JANUS DETROIT STR TR HENDERSON MTG	28,421	45.69	1,332,910.56	1,298,555.49	-34,355.07	65,311.46	5.03	5.06

Asset	Units	Price	Tax Cost	Market Value	Gain/Loss	Est. Income	Current Yield	% Total
Fixed Income								
Total MBS			\$2,360,558.26	\$2,291,033.55	\$-69,524.71	\$107,055.57	4.67%	8.93
CMBS								
ISHARES CMBS BOND FUND	20,194	49.08	1,051,508.34	991,121.52	-60,386.82	34,188.44	3.45	3.86
Total CMBS			\$1,051,508.34	\$991,121.52	\$-60,386.82	\$34,188.44	3.45%	3.86
International - Em Mkt								
DOUBLELINE EMG MKTS INC I	12,420	9.12	124,375.60	113,269.46	-11,106.14	6,346.57	5.60	0.44
Total International - Em Mkt			\$124,375.60	\$113,269.46	\$-11,106.14	\$6,346.57	5.60%	0.44
Total Fixed Income			\$8,177,345.97	\$7,841,340.34	\$-336,005.63	\$332,066.40	4.23%	30.55
Cash Equivalents								
Cash Equivalents								
INVESCO GOVERNMENT & AGENCY FUND	1,911,016	1.00	1,911,016.06	1,911,016.06	0.00	70,847.10	3.71	7.44
Pending Cash	-209	1.00	-208.52	-208.52	0.00	0.00	0.00	0.00
Total Cash Equivalents			\$1,910,807.54	\$1,910,807.54	\$0.00	\$70,847.10	3.71%	7.44
Total Cash Equivalents			\$1,910,807.54	\$1,910,807.54	\$0.00	\$70,847.10	3.71%	7.44
Grand Total			\$21,822,966.04	\$25,668,775.46	\$3,845,809.42	\$828,302.87	3.23%	100.00

Arvest Bank Trust Division – Current Account(s) Review, Hypothetical Illustrations and Performance Disclosures:

Account Review Document - This is not your official trust statement or tax reporting document; it should not be relied upon for tax return preparation purposes. Some assets may not be held with our firm and could be held directly with an insurance carrier or other holding source. Security positions and balances are not real time. Balances may be rounded to the nearest .01. Some balances may not appear due to availability of pricing information. Review your official statement(s) for more details and complete information. Information in this report is obtained from sources deemed to be reliable, but Arvest Bank and its subsidiaries do not guarantee the accuracy or completeness of the information or make any warranties regarding the results to be obtained from its use. Arvest Bank and its subsidiaries shall not be liable for any claims or losses of any nature related to reliance on the information contained herein, including, but not limited to, lost profits, punitive or consequential damages. This material is for informational purposes only.

Hypothetical Illustration Document - Portfolio percentages and holdings are shown for illustrative purposes only. Actual investment percentages may vary due to price fluctuation. This and/or the accompanying information was prepared by or obtained from sources that Arvest Bank believes to be reliable. Any market prices are only indications of market values and are subject to change. The material has been prepared or is distributed solely for informational purposes and is not a solicitation or an offer to buy any security or instrument or to participate in any trading strategy. Example interest rate sensitivity simulations are for illustrative purposes only.

Additional Performance & Risk Related Disclosures - Returns and yields illustrated are gross and do not reflect deduction of fees. Past performance is no guarantee of future results. Asset allocation/diversification does not guarantee a profit or protect against losses. Figures are as of the date(s) indicated and are subject to change without notice. Dividends are not guaranteed and are subject to change or elimination. Yields are calculated based on the current share price.

Arvest Bank does not provide tax or legal advice. We recommend you consult your tax and legal advisors before taking action that could have tax or legal consequences.

Please contact your Investment Officer or Trust Officer if you have questions about the information contained herein.

Trust services are provided by Arvest Bank.